

SOLAR MODULES

Features & Performance



Our PV modules have been certified by the TUV, CE, CSA; SKY ENERGY is certified by ISO9001, ISO14001, OHSAS18001 etc. As a leading PV manufacturer in Indonesia, our prioritized goal is to keep developing and producing high quality and high efficiency modules.



- ☛ **Maximum Power: 85Wp**
- ☛ **Module Efficiency: 16.84%**
- ☛ **Product Warranty: 2 years**
- ☛ **Power Warranty: 2 years $\geq 90\%$
5 years $\geq 80\%$**

ST64M 60-FLP
ST28M 85-FLP
ST36M 18, 50, 110-FLP
ST32M 30, 100-FLP
ST40M 120-FLP
ST44M 135-FLP

Mechanical Property

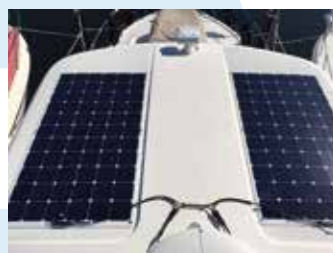
- ☛ Snow loads up to 5400Pa
- ☛ Wind loads up to 2400Pa

Low Light Performance

- ☛ Excellent performance under low light (morning, evening and cloudy days)

High Durability

- ☛ Durable PV modules, independently tested for harsh environmental conditions, such as exposure to salt mist, ammonia and known PID risk factors.



Electrical Performance

(STC : AM 1.5, 1000W/m², 25°C)

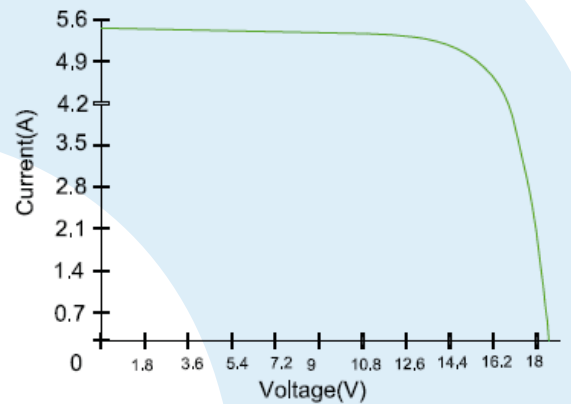
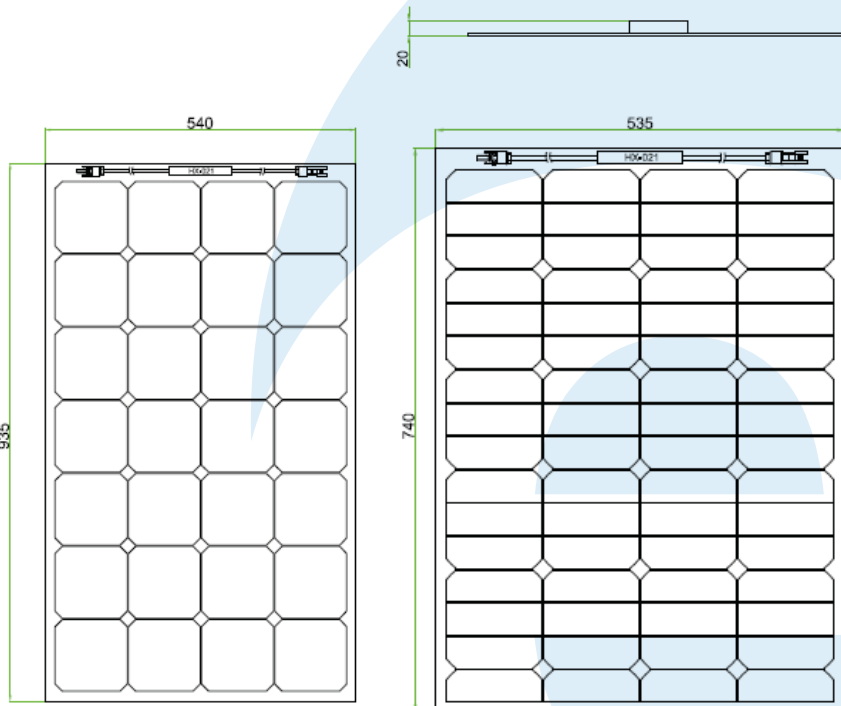
Module Type	ST36M 18-FLP	ST32M30-FLP	ST36M 50-FLP	ST64M 60-FLP	ST28M 85-FLP	ST32M 100-FLP	ST36M 110-FLP	ST40M 120-FLP	ST44M 135-FLP
Maximum Power (Pmax / W)	18	30	50	60	85	100	110	120	135
Power Tolerance	± 5 %								
Maximum Power Voltage (Vm / V)	18.6	16.1	17.2	32.1	14.8	17.6	19.4	21.2	23.4
Maximum Power Current (Im / A)	0.97	1.87	2.92	1.87	5.75	5.69	5.69	5.68	5.78
Open Circuit Voltage (Voc / V)	22.2	18.9	20.5	38.5	17.6	21.1	23.2	25.3	28.0
Short Circuit Current (Isc / A)	1.06	2.05	3.21	2.05	6.31	6.24	6.25	6.24	6.35
Module Efficiency (%)	14.64	14.38	16.69	15.16	16.84	17.39	17.12	16.84	17.42

Temperature Properties

Maximum System Voltage (VDC)	600								
Maximum Series Fuse Rating (A)	2	3	5	3	10	10	10	10	10
Normal Operating Cell Temperature	45±2 °C								
Temperature Coefficient of Pm	-0.38 %/°C								
Temperature Coefficient of Voc	-60.8mV/°C								

Mechanical Properties

Dimensions (LxWxH / mm)	444x277x3/20	535x390x3/20	560x535x3/20	740x535x3/20	935x540x3/20	1065x540x3/20	1190x540x3/20	1320x540x3/20	1435x540x3/20
Maximum Bend Degree (°)	30 degree								
Weight (Kg)	0.4	0.6	0.8	1.0	1.2	1.4	1.5	1.8	2.0
Cells Efficiency	20.5%	19.6%	21.5%	19.6%	20.5%	20.0%	20.0%	20.0%	20.8%
Sizes of Cells	125*(1/6)	125*(1/3)	125*(1/2)	125*(1/3)	125*125	125*125	125*125	125*125	125*125
No. of Cells(pcs)	36 (2x18)	32 (4x8)	32 (4x8)	64 (4x16)	28 (4x7)	32 (4x8)	36(4x9)	40(4x10)	44(4x11)
Sizes of Junction box cable (mm ²)	2.5	2.5	2.5	2.5	4	4	4	4	4
Container 20GP(pcs)	10944	6432	4288	3752	2600	2600	2080	2080	1820
Container 40HC(pcs)	26208	16416	10944	8512	6776	6160	5544	4928	4620



Maximum Recommend Bending Degree: 30°

